

Hammer®

User Manual

Dust collector S01



Keep this manual handy and in good condition for continual reference!



Attention! The machine must be inspected immediately on arrival. If the machine was damaged during transport or if any parts are missing, a written record of the problems must be submitted to the forwarding agent and a damage report compiled. Be sure, also to notify your supplier immediately.



For the safety of all personnel, it is necessary to conscientiously study this manual before assembly and operation. This manual must be kept in good condition, as it belongs to the machine! Furthermore, keep the manual at hand and in the vicinity of the machine so that it is accessible to personnel when they are using, maintaining or repairing the machine.

HAMMER | A product of the FELDER GROUP

© FELDER Maschinenbau

KR-Felder-Straße 1
A-6060 Hall in Tirol

Tel.: +43 (0) 5223 45 0 90

Fax: +43 (0) 5223 45 0 99

Email: info@felder.com

Internet: www.felder.com

18. April 2007

Table of Contents

1	General	4
1.1	Legend	4
1.2	Information about the manual	4
1.3	Copyright.....	4
1.4	Liability and warranty.....	5
1.5	Warranty notice.....	5
1.6	Spare parts	5
1.7	Disposal	5
2	Safety	7
2.1	Intended use.....	7
2.2	Manual contents	7
2.3	Making changes and modifications to the machine	7
2.4	Responsibilities of the owner operator	8
2.5	What is required of personnel	8
2.6	Work safety	8
2.7	Personal safety.....	9
2.8	Machine hazards	9
3	Declaration of Conformity	10
4	Specifications	11
4.1	Dimensions and weight.....	11
4.2	Operation and storage conditions	11
4.3	Noise emission	12
5	Construction	13
5.1	Overview	13
6	Transport, packaging and storage	14
6.1	Safety instructions	14
6.2	Transport.....	14
6.3	Transport inspection.....	14
6.4	Packaging	15
6.5	Storage.....	15
7	Setup and installation	16
7.1	Safety instructions	16
7.2	Installation	16
7.3	Machine assembly	17
7.4	Electrical connection	19
7.5	Circuit diagram.....	22
7.6	Switching on and off	18
8	Maintenance	20
8.1	Safety instructions	19
8.2	Maintenance work	19
9	Spare parts	23
10.	Index	25

1 General

1.1 Legend

Important technical safety instructions in this manual are marked with symbols. These instructions for work safety must be followed. In all

these particular cases, special attention must be paid in order to avoid accidents, injury to persons or material damage.



Warning! Risk of injury or death!

This symbol marks instructions that must be followed in order to avoid harm to one's health, injuries, permanent impairment or death.



Warning! Danger – electric current!

This symbol warns of potentially dangerous situations related to electric current. Not observing the safety instructions increases the risk of serious injury or death. Required electrical repairs may only be carried out by a trained electrical technician.



Attention! Risk of material damage!

This symbol marks instructions which, if not observed, may lead to material damage, functional failures and/or machine breakdown.



Note:

This symbol marks tips and information which should be observed to ensure efficient and failure-free operation of the machine.

1.2 Information about the manual

This manual describes how to operate the machine properly and safely. Be sure to follow the safety tips and instructions stated here as well as any local accident prevention regulations and general safety regulations. Before beginning any work on the machine, ensure that the manual, in particular the chapter entitled „Safety“ and the respective safety guidelines, has been read in its

entirety and fully understood. This manual is an integral part of the machine and must therefore be kept in the direct vicinity of the machine and be accessible at all times. If the machine is sold, rented, lent or otherwise transferred to another party, the manual must accompany the machine.

1.4 Copyright

This manual should be handled confidentially. It is designated solely for those persons who work on or with the machine. All descriptions, texts, drawings, photos and other depictions are protected by copyright and other commercial laws. Illegal use of the materials is punishable by law.

This manual – in its entirety or parts thereof – may not be transferred to third parties or copied in any way or

form, and its contents may not be used or otherwise communicated without the express written consent of the manufacturer.

Infringement of these rights may lead to a demand for compensation or other applicable claims. We reserve all rights in exercising commercial protection laws.

General

1.3 Liability and warranty

The contents and instructions in this manual were compiled in consideration of current regulations and state-of-the-art technology as well as based on our know-how and experience acquired over many years. This manual must be read carefully before commencing any work on or with this machine. The manufacturer shall not be liable for damage and or faults resulting from the disregard of instructions in the manual. The texts and images do not necessarily represent the delivery contents.

The images and graphics are not depicted on a 1:1

scale. The actual delivery contents are dependent on custom-build specifications, add-on options or recent technical modifications and may therefore deviate from the descriptions, instructions and images contained in the manual. Should any questions arise, please contact the manufacturer. We reserve the right to make technical modifications to the product in order to further improve user-friendliness and develop its functionality.

1.5 Warranty notice

The guarantee period is in accordance with national guidelines. Details may be found on our website, www.felder-group.com

1.6 Spare parts



Attention! Non genuine, counterfeit or faulty spare parts may result in damage, cause malfunction or complete breakdown of the machine.

If unauthorised spare parts are installed in the machine, all warranty, service, compensation and liability claims against the manufacturer and their contractors, dealers and representatives shall be rejected.

Use only genuine spare parts supplied by the manufacturer.



Note: A list of authorised genuine spare parts can be found at the end of this operating manual.

1.7 Disposal

If the machine is to be disposed of, separate the components into the various materials groups in order to allow them to be reused or selectively disposed of. The whole structure is made of steel and can therefore be dismantled without problem. This material is also easy to dispose of and does not pollute the environment or

jeopardise public health. International environmental regulations and local disposal laws must always be complied with.



Attention! Used electrical materials, electronic components, lubricants and other auxiliary substances must be treated as hazardous waste and may only be disposed of by specialised, licensed firms.

2 Safety

At the time of its development and production, the machine was built in accordance with prevailing technological regulations and therefore conforms to industry safety standards.

However, hazards may arise should the machine be operated by untrained personnel, used improperly or employed for purposes other than those it was designed for. The chapter entitled „Safety“ offers an overview of all the important safety considerations necessary to optimise

safety and ensure the safe and trouble-free operation of the machine.

Additionally, in order to further minimise risks, the other chapters of this manual contain specific safety instructions, all marked with symbols. Besides the various instructions, there are a number of pictograms, signs and labels affixed to the machine that must also be heeded. These must be kept visible and legible and may not be removed.

2.1 Intended use

The dust collector S01 is a dust and chip collecting unit with a radial compressor and vacuums chips and dust from wood and similar materials.

Collecting poisonous gases, vapours, fluids and foam

etc. and all other materials which form part of the MAK-List is prohibited.



Attention! Any use outside the machine's intended purpose shall be considered improper and is therefore not permitted. All claims regarding damage resulting from improper use that are made against the manufacturer and its authorised representatives shall be rejected. The operator shall be solely liable for any damage that results from improper use of the machine.

The term „proper use“ also refers to correctly observing the operating conditions as well as the specifications and instructions in this manual.

The machine may only be operated with original manufacturer parts and accessories.

2.2 Manual contents

All those appointed to work on or with the machine must have fully read and understood the manual before commencing any work. This requirement must be met even if the appointed person is familiar with the operation of such a machine or a similar one, or has been trained by the manufacturer. Knowledge about the contents of this manual is a prerequisite for protecting personnel

from hazards and avoiding mistakes so that the machine may be operated in a safe and trouble-free manner. It is recommended that the operator requests proof from the personnel that the contents of the manual have been read and understood.

2.3 Making changes and modifications to the machine

In order to minimise risks and to ensure optimal performance, it is strictly prohibited to alter, retrofit or modify the machine in any way without the express consent of the manufacturer. All the pictograms, signs and labels affixed to the machine must be kept visible, readable and

may not be removed. Pictograms, signs and labels that have become damaged or unreadable must be replaced promptly.

2.4 Responsibilities of the owner operator

This manual must be kept in the immediate vicinity of the machine and be accessible at all times to all persons working on or with the machine. The machine may only be operated if it is in proper working order and in safe condition. Every time before the machine is switched on, it must be inspected for visible defects and general condition. All instructions in this manual must be strictly followed without reservation.

Besides the safety advice and instructions stated in this manual, it is necessary to consider and observe local ac-

cident prevention regulations, general safety regulations as well as current environmental stipulations that apply to the operational range of the machine.

The operator and designated personnel are responsible for the trouble-free operation of the machine as well as for clearly establishing who is in charge of installing, servicing, maintaining and cleaning the machine. Machines, tools and accessories must be kept out of the reach of children.

2.5 What is required of personnel

Only authorized and trained personnel may work on and with the machine. Personnel must be briefed about all functions and potential dangers of the machine. „Specialist staff“ is a term that refers to those who – due to their professional training, know-how, experience, and knowledge of relevant regulations – are in a position to assess delegated tasks and recognise potential risks. If the personnel lack the necessary knowledge for working on or with the machine, they must first be trained. Responsibility for working with the machine (installation, service, maintenance, overhaul) must be clearly defined and strictly observed. Only those persons who can be expected to carry out their work reliably may be given

permission to work on or with the machine. Personnel must refrain from working in ways that could harm others, the environment or the machine itself. It is absolutely forbidden for anyone who is under the influence of drugs, alcohol or reaction-impairing medication to work on or with the machine. When appointing personnel to work on the machine, it is necessary to observe all local regulations regarding age and professional status. The user is also responsible for ensuring that unauthorised persons remain at a safe distance from the machine. Personnel are obliged to immediately report to the operator any irregularities with the machine that might compromise safety.

2.6 Work safety

Following the safety advice and instructions given in this manual can prevent bodily injury and material damage while working on and with the machine. Failure to observe these instructions can lead to bodily injury and damage to or destruction of the machine. Disregard of the safety advice and instructions given in this manual as

well as the accident prevention regulations and general safety regulations applicable to the operative range of the machine shall release the manufacturer and their authorised representatives from any liability and from all compensation claims.

2.7 Personal safety

When working on or with the machine, the following must be strictly observed:



Persons with long hair who are not wearing a hairnet are not permitted to work on or with the machine.



It is prohibited to wear gloves while working on or with the machine. All jewellery (rings, bracelets, necklaces, etc.) must be removed before starting work on or with the machine.

When working on or with the machine, the following must always be worn by personnel:



Protective gear (overalls, safety goggles, dust mask, hairnet to contain long hair, etc.)
Sturdy, tight-fitting clothing (tear-resistant, no wide sleeves).



Protective footwear
That protects the feet from heavy falling objects and prevents sliding on slippery floors.



Hearing protection
To protect against loss of hearing.

2.8 Machine hazards

The machine has undergone a hazard analysis. The design and construction of the machine are based on the results of this analysis and correspond to state-of-the-art technology.
The machine is considered operationally safe when used

properly.
Nevertheless, there are some residual risks that must be considered.
The machine runs with high electrical voltage.



Warning! Danger – electric current: electrical energy can cause serious bodily injury. Damaged insulation materials or defective individual components can cause a life-threatening electrical shock.

- Before carrying out any maintenance, cleaning and repair work, switch off the machine and secure it against being accidentally switched on again.
- When carrying out any work on the electrical equipment, ensure that the voltage supply is completely isolated.
- Do not remove any safety devices or alter them to put them out of commission.

Declaration of Conformity

3 Declaration of Conformity



EG-Declaration of Conformity
according to Machine Guidelines 98/37/EG i.d. Fassung 98/79/EG

Manufacturer:

**FELDER
KR-Felder-Straße 1
A-6060 Hall in Tirol**

We hereby declare that the machine indicated below, which corresponds to the design and construction of the model we put on the market, conforms with the safety and health requirements as stated by the EC.

Product designation:

Dust collector

Make:

HAMMER

Model designation:

S01

The following EC guidelines were applied:

**98/37/EG
73/23/EWG
93/68/EWG**

**- Machine Guidelines
- Low-Voltage Guidelines
- Electromagnetic Tolerance
Guidelines**

The following harmonised norms were applied:

**EN 292-1
EN 292-2
EN 60204-1**

**EN 50081-2 (01.92)
EN 50082-2 (03.95)**

This EC Declaration of Conformity is valid only if the CE label has been affixed to the machine.

Modifying or altering the machine without the express written agreement of the manufacturer shall render the warranty null and void.

Johann Felder, Managing Director

Hall in Tirol, 07.08.2006

4 Specifications

4.1 Dimensions and weight

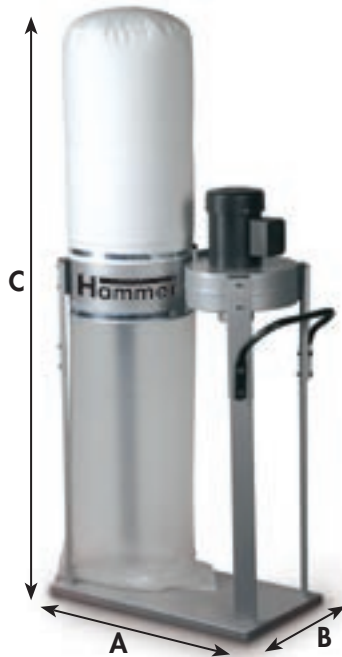


Fig. 1: Total size

Basic extractor	
Length A ca.	720 mm
Width B ca.	380 mm
Height C (incl Filter) ca.	1670 mm
Weight	25 kg
Motor power	0,75, 1x220 V, 50 Hz
Connection-Ø	100 mm
Chip bag contents	100 l
Volume flow max.	950 Cubic meters per hour

4.2 Operation and storage conditions

Operation/room temperature	+10° to +40° C
Storage temperature	-10° to +50° C

4.4 Noise emission

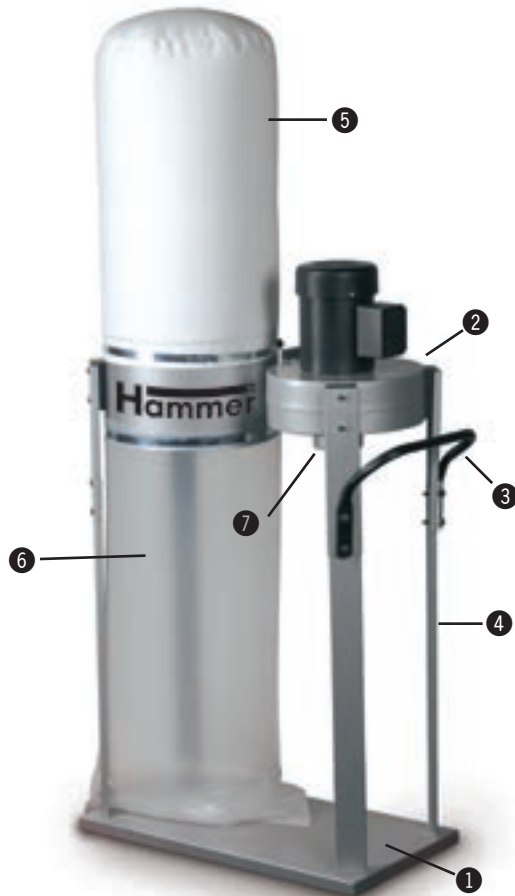
The specified sound emission levels do not take into consideration a possible tolerance range for series production and are not considered appropriate to identify the critical sound level according to the „Sound“ accident prevention regulations. The critical sound level depends on the running time, the use of the machine and the environmental conditions. Therefore, the critical sound level

can only be measured in the user's workshop. The specified sound pressure level was measured in a free field at a distance of 1 m from the machine and at a height of 1,6 m.

Acoustic value	
Idle	86,2 Decibel
work	99,2 Decibel

5 Construction

5.1 Overview



- ① Base
- ② Collector body
- ③ Handle bar
- ④ Collector casters
- ⑤ Filter bag Order no.: 02.1.127
- ⑥ Chip bag Order no.: 02.2.013 - 10 pcs.
- ⑦ Hose connection Ø 100 mm

Fig. 2: Overview

6 Transport, packaging and storage

6.1 Safety instructions



Warning! Risk of injury: There is a risk of injury due to falling parts while transporting, loading or unloading the machine.



Attention! Risk of material damage: The machine can be damaged or destroyed if it is subjected to improper handling during transport.

For this reason the following safety instructions must be observed:

- Never lift loads over a person.
- Always move the machine with the utmost care and precaution.
- Only use suitable lifting accessories and hoisting devices that have a sufficient load-carrying capacity.
- The machine should never be lifted by its protruding parts (e.g. working table).
- Consider the machine's centre of gravity when transporting it (minimise the risk of it tipping over).
- Take measures to prevent the machine from slipping sideways.
- Ropes, belts or other hoisting devices must be equipped with safety hooks.
- Do not use torn or worn ropes.
- Do not use knotted ropes or belts.
- Ensure that ropes and belts do not lie against sharp edges.
- Transport the machine as carefully as possible in order to prevent damage.
- Avoid subjecting the machine to shocks.
- When transporting the machine overseas, ensure that the packaging is airtight and that a desiccant is added to protect the metal parts against corrosion.

6.2 Transport



Attention! Transport the machine according to the enclosed transport and assembly instructions!
Never lift the machine by its planer tables. Ropes, belts and chains may only be fastened to the base.

6.3 Transport inspection

Upon arrival, inspect the shipment to ensure that it is complete and has not suffered any damage. If any transport damage is visible, do not accept the delivery or accept it only with reservation. Record the scope of the damage on the transport documents/delivery note. Initiate the complaint process.

For all defects that are not discovered upon delivery, be sure to report them as soon as they are recognised as damage claims must be filed within a certain period, as granted by law.

Transport, packaging and storage

6.4 Packaging

If no agreement has been made with the supplier to take back the packaging materials, help to protect the environment by reusing the materials or separating them according to type and size for recycling.



Attention! Dispose of the packaging materials in an environmentally friendly way and always in accordance with local waste disposal regulations. If applicable, contract a recycling firm to dispose of the packaging materials.



Note: Help preserve the environment! Packaging materials are valuable raw materials and in many cases, they can be used again or expediently reprocessed or recycled.

6.5 Storage

Keep items sealed in their packaging until they are assembled/installed and be sure to observe the stacking and storage symbols on the outside of the packaging.

Store packed items only under the following conditions:

- Do not store outdoors.
 - Store in a dry and dust-free environment.
 - Do not expose to aggressive substances.
 - Protect from direct sunlight.
 - Avoid subjecting the machine to shocks.
 - Storage temperature: -10° to +50° C
 - Maximum humidity: 60%
 - Avoid extreme temperature fluctuations (condensation build-up).
- Apply a coat of oil to all bare machine parts (corrosion protection).
 - When storing for a period longer than 3 months, apply a coat of oil to all bare machine parts (corrosion protection). Regularly check the general condition of all parts and the packaging. If necessary, refresh or re-apply the coat of anti-corrosive agent.
 - If the machine is to be stored in a damp environment, it must be sealed in airtight packaging and protected against corrosion (desiccant).

7 Setup and installation

7.1 Safety instructions



Warning! Risk of injury: Improper assembly and installation can lead to serious physical injury or equipment damage. For this reason, this work may only be carried out by authorised, trained personnel who are familiar with how to operate the machine and in strict observance of all safety instructions.

- Ensure that there is sufficient space to work around the machine. Ensure there is ample distance between the machine and other solid constructions such as a walls or other machines.
- Keep the work area orderly and clean. Components and tools that are not put in their correct place or put away may be the cause of accidents!
- Install the safety equipment according to the instructions and check that it functions properly.



Warning! Danger – electric current: work on electrical fittings may only be carried out by qualified personnel and in strict observance of the safety instructions.

Before assembling and installing the machine, check to make sure it is complete and in good condition.



Warning! Risk of injury: an incomplete, faulty or damaged machine can lead to serious physical injury or equipment damage. Only assemble and install the machine if the machine and its parts are complete and intact.



Attention! Risk of material damage: Only operate the machine in ambient temperatures from +10° to +40° C. If the instructions are not followed, damage may occur during storage.

7.2 Installation

Characteristics of the installation site:

- Operation/room temperature: +10° to +40° C
- Ensure that the work surface is sufficiently stable and has the proper load-bearing capacity.
- Provide sufficient light at the workstation.
- Ensure there is sufficient clearance for or from neighbouring workstations.
- Risk of injury! Keep machines, tools and accessories etc. out of the reach of children.
- Vacuum hoses and electrical wires should be layed in such a way as to avoid tripping over them.

Setup and installation

7.3 Machine assembly

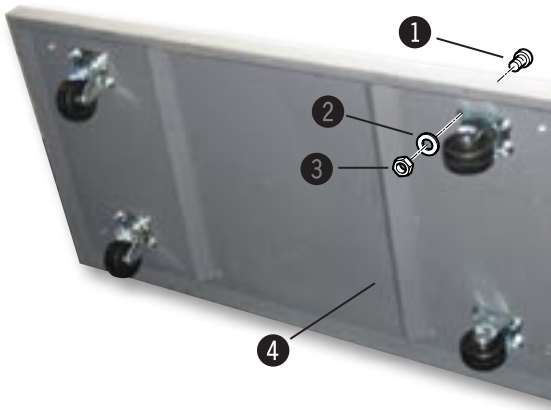


Fig. 3: Rolling carriage

Rolling carriage:

Turn the base plate upside-down and mount the Rollers to the base plate using the socket head cap screws screws (M5x8 mm) and shims as shown.

- ① Socket head cap screws M5x8mm
- ② Shims
- ③ Nuts
- ④ Base plate

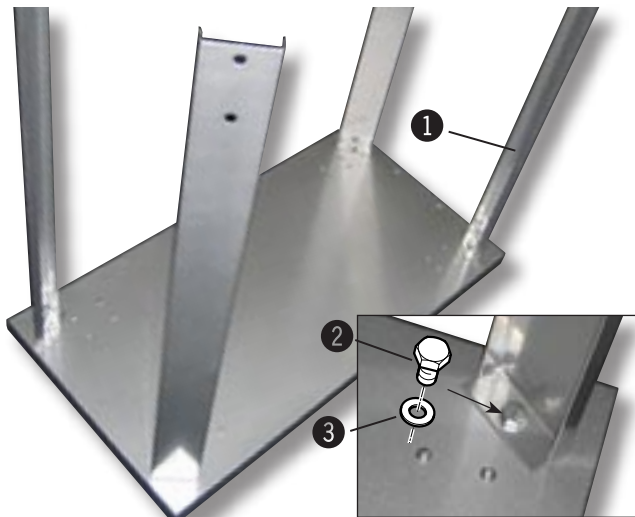


Fig. 4: Base

Assembling casters to the base plate:

Screw the four long casters onto the base plate using the supplied screw (M8x10 mm) and shims as shown.

- ① Collector casters - lang
- ② Screws M8x10 mm
- ③ Shims

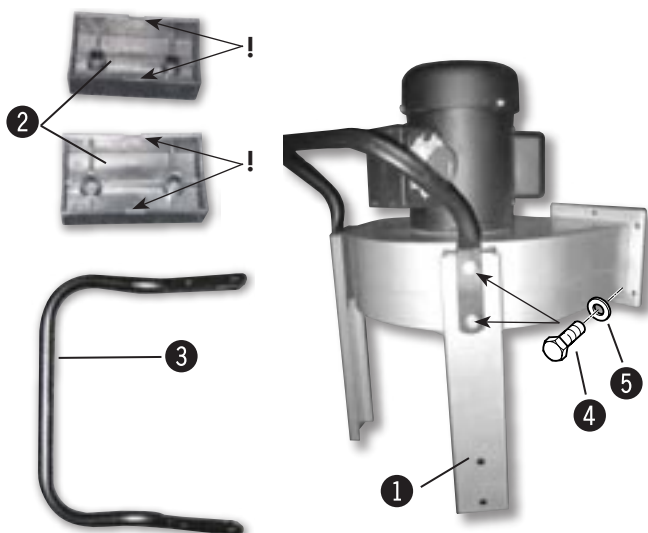


Fig.. 5: Collector casters

Assembling casters to the dust collector:

Screw the two short casters with the plastic brackets and handle to the dust collector using the screws (M8x25 mm) and shims as shown.

- ① Collector casters - short
- ② Plastic brackets
- ③ Handle
- ④ Screws M8x25 mm
- ⑤ Shims

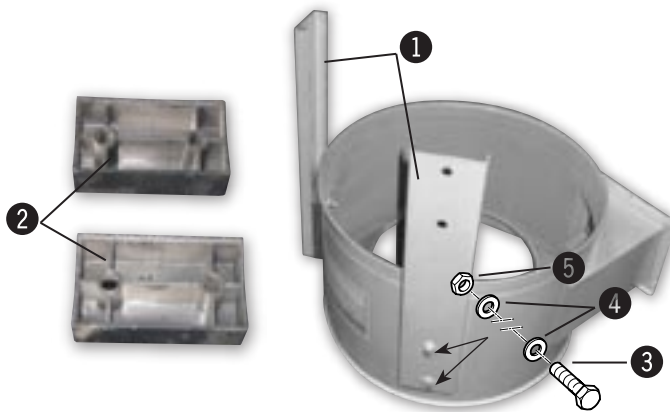


Fig. 6: Filter body casters

Assembling casters to the Filter body:

Screw the two short casters with the plastic brackets to the filter body using the screws (M8x45 mm), shims and nuts as shown.

- ① Collector casters - short
- ② Plastic brackets
- ③ Screws M8x45 mm
- ④ Shims
- ⑤ Nuts

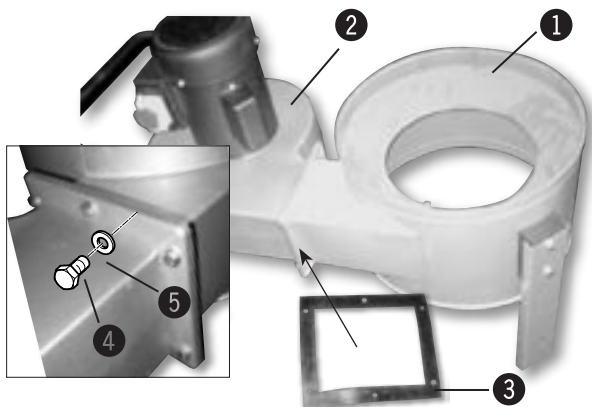


Fig. 7: Connecting dust collector and filter body

Connecting dust collector and filter body:

1. Apply the seal between both machine parts.
2. Connect both machine parts using shims and screws (M6x16).

- ① Filter body
- ② Dust collector
- ③ Seal
- ④ Screws M6x16mm
- ⑤ Shims

Connecting rolling carriage and dust collector:

1. Place the dust collector to the rolling carriage.
2. Connect rolling carriage and dust collector using the screws (M8x16mm), shims and nuts as shown.

- ① Dust collector
- ② Rolling carriage
- ③ Screws M6x16mm
- ④ Shims
- ⑤ Nuts

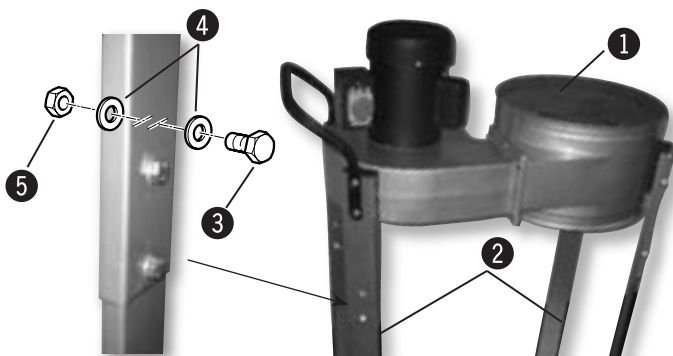


Fig. 8: Connecting rolling carriage and dust collector

Assembling the filter bag support:

Insert the filter bag support into the collector holes as shown.

- ① Filter bag support

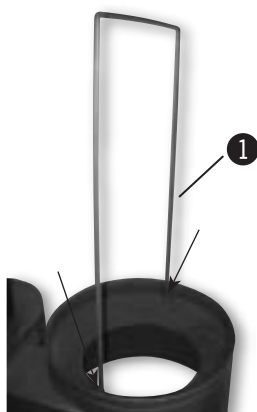


Fig. 9: Bag rod

Setup and installation



Fig. 10: Assembling the filter bag:

Assembling the filter bag:

1. Thread the ratchet strap into the filter bag.
2. Place the filter bag over the filter bag support.
The filter is tightened over the blower body using the ratchet strap.
3. The chip bag is placed over the blower body from below and is also tightened by using the ratchet strap.

- ① Ratchet strap - Filter bag
- ② Filter bag
- ③ Chip bag
- ① Ratchet strap - Chip bag

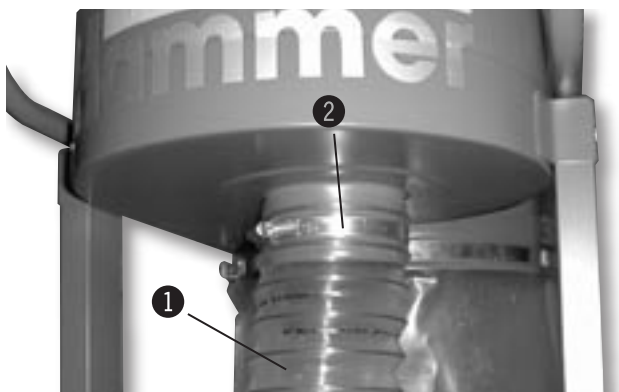


Fig. 11: Vacuum hose

Connecting the vacuum hose:

Connect the vacuum hose with the hose clamp to the collector body.

- ① Vacuum hose - Art. No. 02.0.310
- ② Hose clamp - Art. No. 02.0.115

7.4 Electrical connection

Attach the dust collector to a separate power supply. The electrical circuit should have a 16 A fuse. Before connecting the dust collector to the power source, ensure that the On/Off switch is in OFF position. Check that the voltage requirements on the rating plate

match the power supply. Operating the machine on the wrong voltage will damage the motor!



Attention! To protect the operator from electrical shocks, ensure that the dust collector has been earthed.



Attention! All operations may only be executed by an authorised electrical technician!

7.5 Circuit diagram

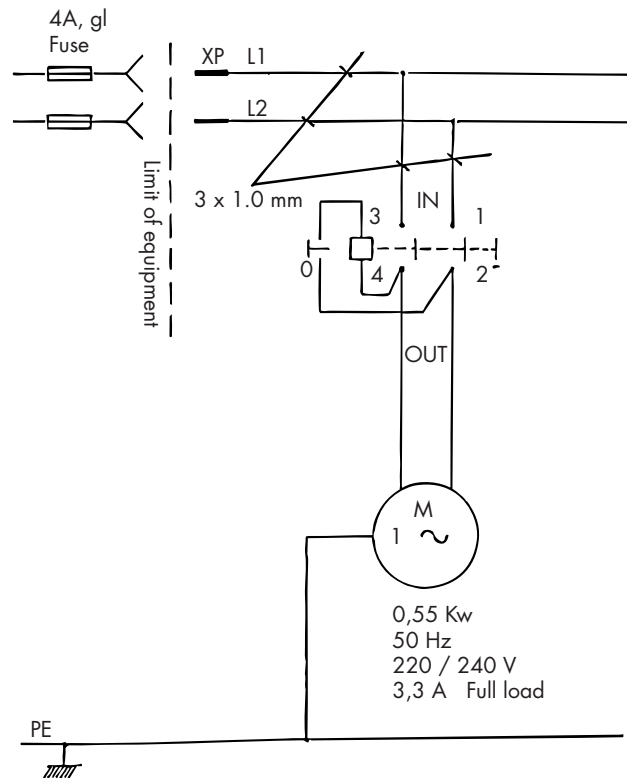


Fig. 12: Circuit diagram

7.6 Switching on and off



Fig. 13: Switching on and off

The dust collector is equipped with an on/off switch. To turn the dust collector on, open the switch cover first. If the switch cover is closed, the dust collector is turned off automatically. Upon power failure, always turn this switch off to prevent the machine restarting automatically once the power returns.

- ① On- and Off switch
- ② Cover

8 Maintenance

8.1 Safety instructions



Warning! Risk of injury: improper maintenance can cause serious injury or damage. For this reason, this work may only be carried out by authorised, trained personnel who are familiar with how to operate the machine and in strict observance of all safety instructions.

- Before beginning any maintenance work on the machine, switch it off and secure it against accidentally being switched on again.
- Ensure that there is sufficient space to work around the machine.
- Keep the work area orderly and clean. Components and tools that are not put in their correct place or put away may be the cause of accidents!
- Following the maintenance work, re-install the guards and check that they are functioning properly.



Warning! Danger – electric current: work on electrical fittings may only be carried out by qualified personnel and in strict observance of the safety instructions.

8.2 Maintenance work

Filter:

The cleanliness of the filter is an important motor power efficiency factor. Clean the filter every time the chip bag is changed, prior to the change, and at the very latest once the vacuum power efficiency drops noticeably. Rap all sides of the filter bag so the collected dust and chips fall down into the chip bag.

To clean the dust extractor effectively, switch it off prior to the cleaning process. Once the filter can no longer be cleaned satisfactorily, replace it. Replace damaged filters immediately.

Chip bag:

Empty the collection bag at the very latest when the chips reach a level approximately 6 inches below the attachment edge. In the event of damage to the collection bag, the bag must be replaced immediately! The dust collector must always be switched off to change the chip bag.

Fan wheel:

Clean resin residue and chips from the impeller on a weekly basis, at the latest when the vacuum power sinks or the impeller becomes imbalanced.

Dust collector:

Remove chips and dust from the dust collector on a weekly basis. Remove the filter and chip bags to gain access to the interior of the unit.

Motor and electrical equipment:

The motor and electrical equipment are maintenance free. Ensure that the motor can always cool sufficiently i.e., clean chips and dust from the cooling fins regularly.



Warning! Risk of injury!
Before you start to clean the machine, control if the machine parts have cooled down!
Switch off the device and wait for the ventilator to come to a halt.

9 Spare parts

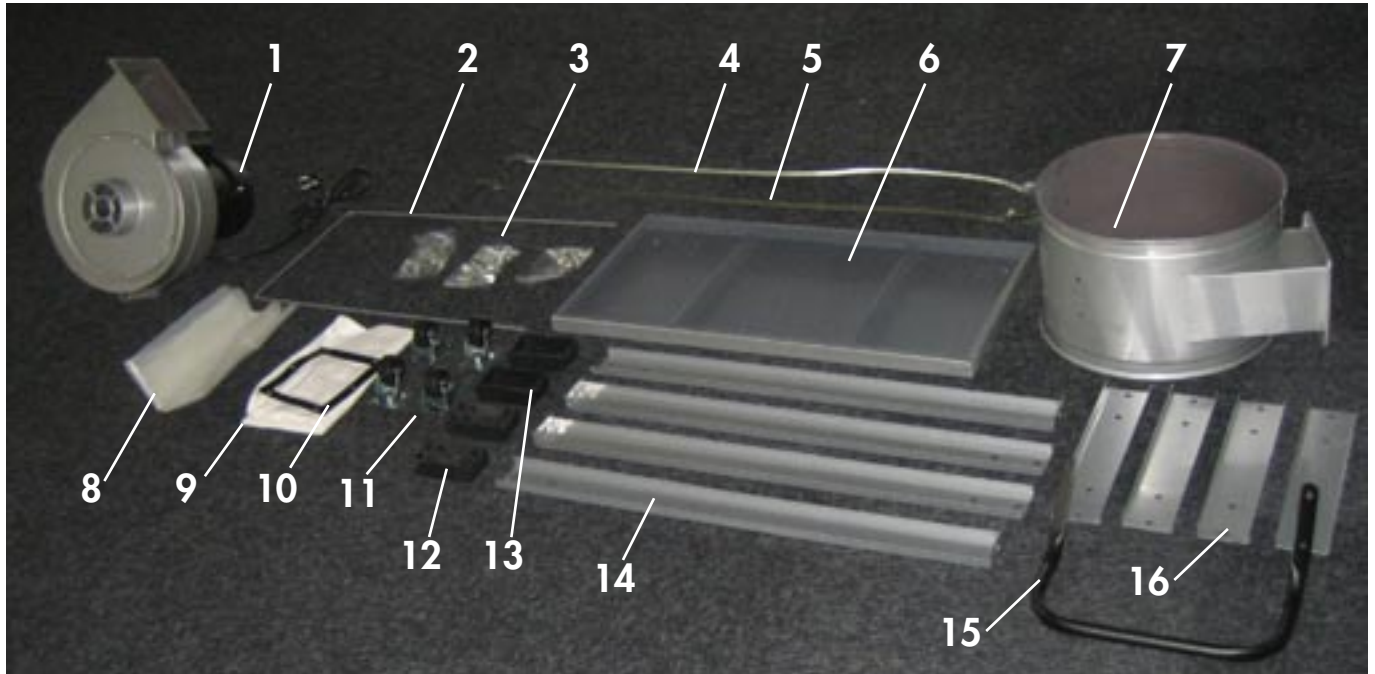


Fig. 14: Spare parts

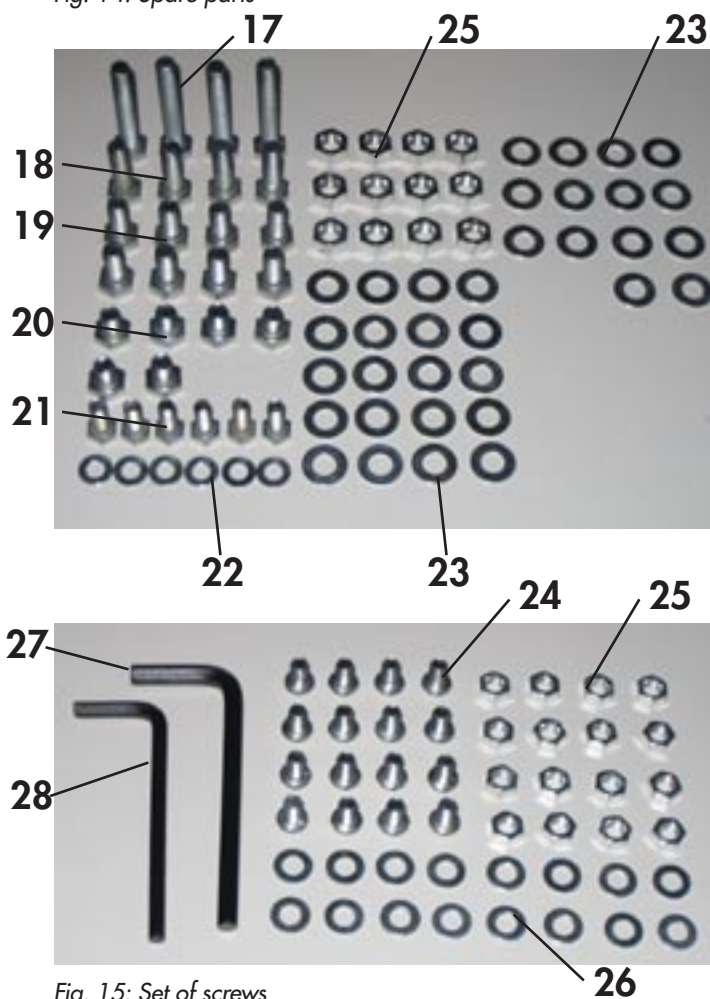


Fig. 15: Set of screws

Item	Designation	Pcs.
1	Dust collector	1
2	Filter bag support	1
3	Set of screws	1
4	Ratchet strap - Filter bag	1
5	Ratchet strap - Chip bag	1
6	Base	1
7	Filter body	1
8	Chip bag	1
9	Filter bag	1
10	Seal	1
11	Steering rollers	4
12	Plastic brackets- Filter body	2
13	Plastic brackets- dust collector	2
14	Collector casters - long	4
15	Handle	1
16	Collector casters - short	1
17	Socket head cap screw M8x45mm	4
18	Socket head cap screw M8x25mm	4
19	Socket head cap screw M8x16mm	8
20	Socket head cap screw M8x16mm	6
21	Socket head cap screw M6x16mm	6
22	Shims M6	6
23	Shims M8	34
24	Socket head cap screw M5x8mm	16
25	Nuts M5	16
26	Shims M5	16
27	Allen key 5mm	1
28	Allen key 4mm	1

10 Index

C

Copyright, 4

D

Dangers, 8

Declaration of Conformity, 9

Dimensions, 10

E

Electrical connection, 17

Explanations of the symbols, 4

I

Intended use, 6

Information about the manual, 4

Installation, 14

L

Liability, 5

M

Manual contents, 6

Maintenance work, 20

Motor power, 9

N

Noise emission, 10

P

Packaging, 12

Personal safety equipment, 9

R

Responsibilities of the owner operator, 7

S

Safety, 6

Safety instructions, 12,14,19

Specifications, 10

Spare parts, 5, 20

Storage, 12

T

Transport, 12

Transport inspection, 12

W

Warranty, 5

Warranty notice, 5

Work safety, 7

Hammer®

KR-Felder-Straße 1
A-6060 Hall in Tirol
Tel.: +43 (0) 5223 / 45 0 90
Fax: +43 (0) 5223 / 45 0 99
Email: info@felder.at
Internet: www.felder.at